

Writtle Park Limited

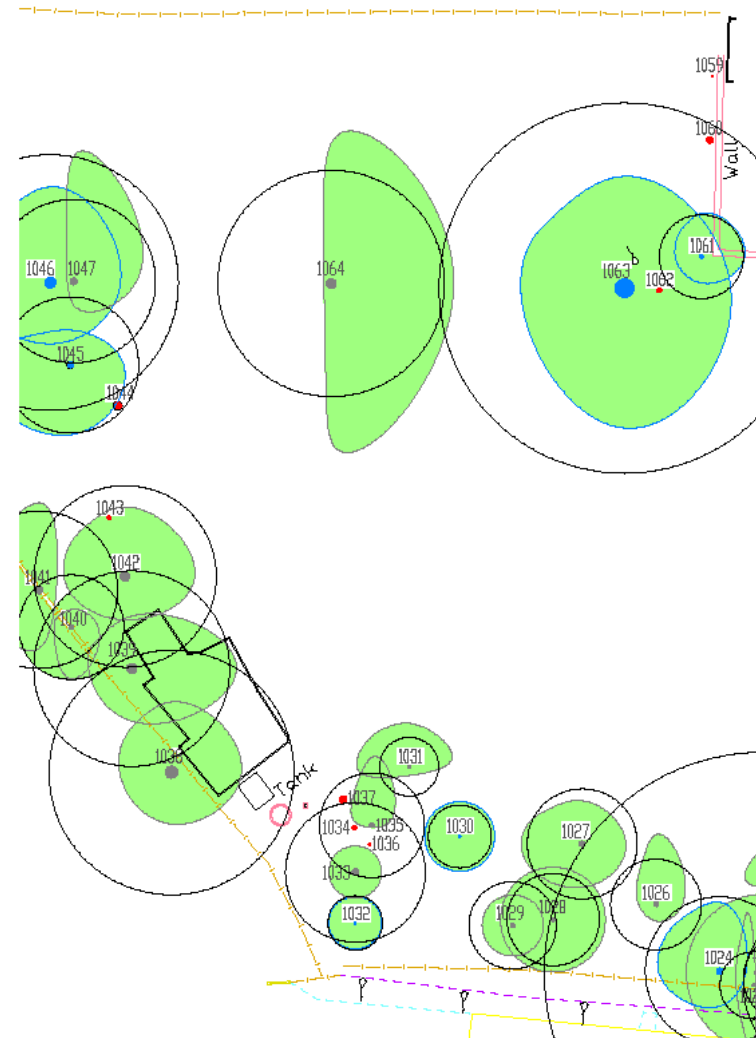
Trees & Development: B.S. 5837

- B.S. 5837: 2005. Recommendations for Trees in relation to Construction is a pre-requisite for Planning Applications where trees are involved with building development.
- The process generally involves a Survey and Constraints Plan, an Implication Assessment, Method Statement and Tree Protection Plan.



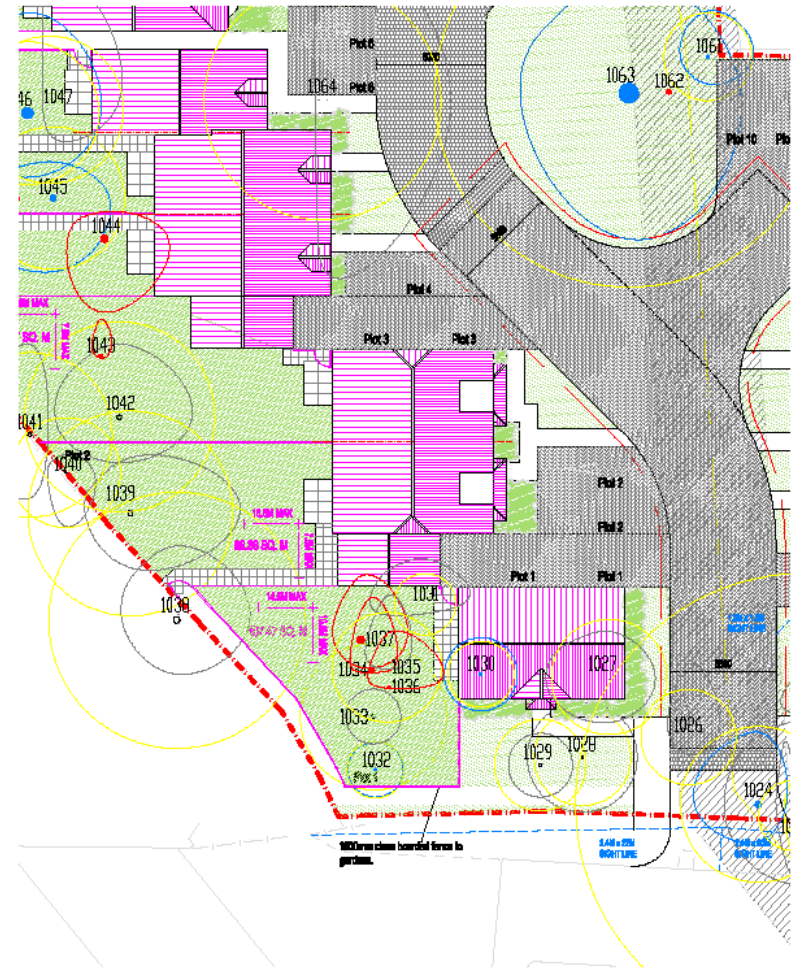
Writtle Park Limited Trees & Development: B.S. 5837

- The Tree Survey is the initial part of process and involves a site visit.
- The survey details species name, dimensions of the trees and observations as to its structural condition.
- Each tree is categorised as to its retention value in accordance with B.S.5837.
- The survey allows the development of a Tree Constraints Plan (TCP), identifying the Root Protection Area (RPA). These are areas that should be left undisturbed around each retained tree.



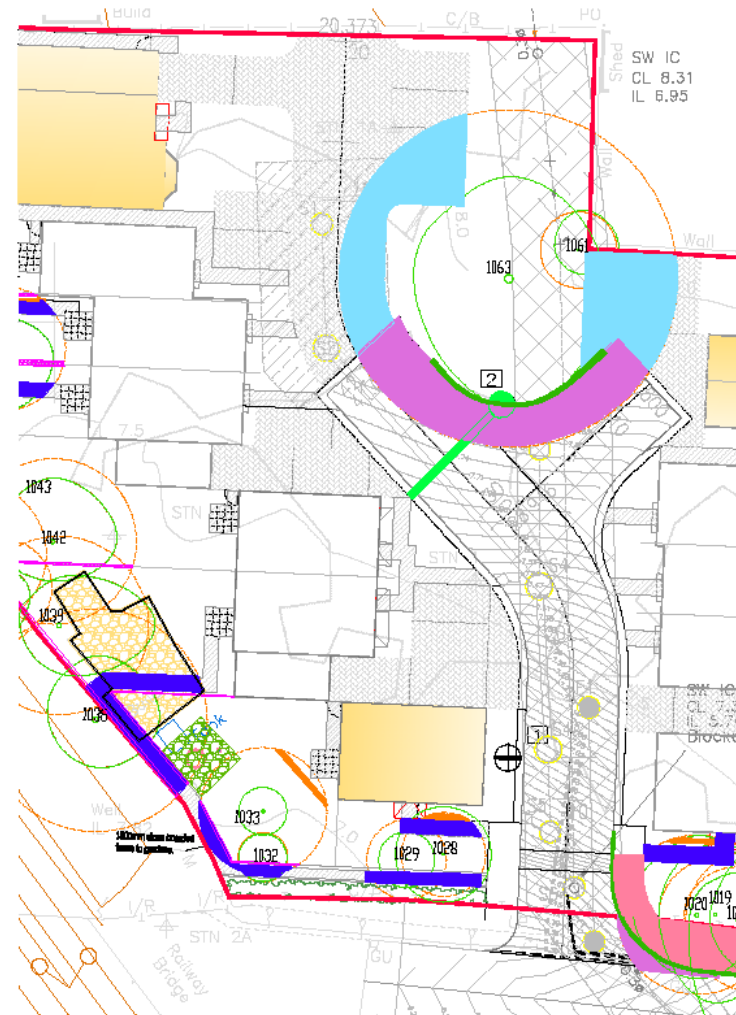
Writtle Park Limited Trees & Development: B.S. 5837

- The Arboricultural Implication Assessment considers how the proposed development and its associated trees will co-exist and interact in the present and the future.
- The AIA addresses issues such as statutory constraints, above and below constraints, the construction of the proposed development, alternatives to tree loss and infrastructure requirements.
- This report also considers such future issues as on going management and maintenance of trees retained. It considers the end use of space, the need to prune or remove trees due to excessive shade or encroachment and whether it is possible to plant new trees.



Writtle Park Limited Trees & Development: B.S. 5837

- The Arboricultural Method Statement (AMS) is a detailed recommended methodology as to works to be undertaken to ensure against potential damage to trees or their root systems.
- It includes a schedule of tree work operations and a recommended sequence of build events in relation to the trees.
- The AMS is drawn up along with a Tree Protection Plan (TPP) after the layout proposals have been finalised.
- The TPP shows trees to be retained and removed, the location of barriers and type of barriers to be installed, storage areas and ground protection where necessary.



Writtle Park Limited
Trees & Development: B.S. 5837

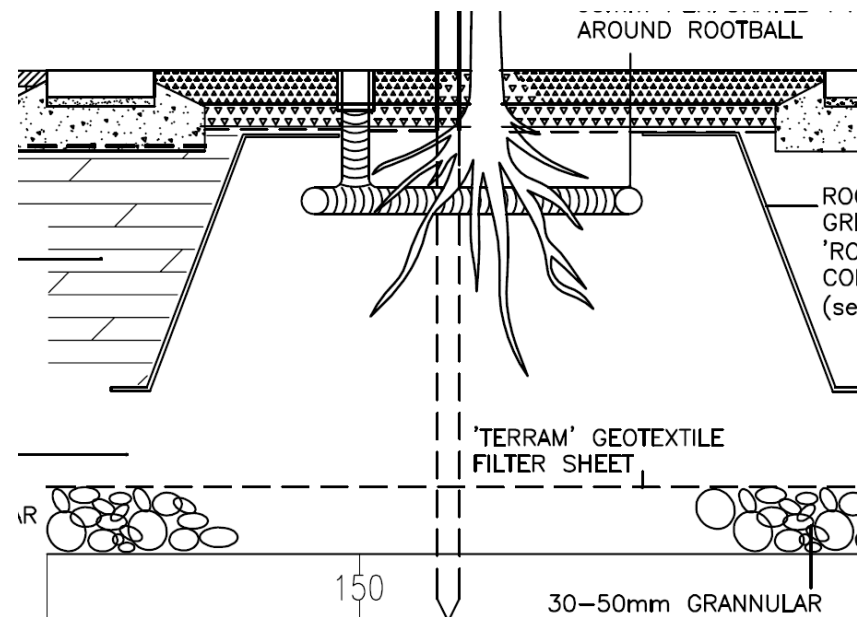
- Mitigation procedures are outlined with suitable suggestions as to procedures and installations.
- The AMS will take into consideration construction operations undertaken in the vicinity of the trees. It will deal with such issues as site access, intensity of construction activity, space needed for works, location of materials and location of service runs.



Writtle Park Limited Trees & Development: B.S. 5837

As part of the services provided we also produce detailed planting plans:

- Designating suitable planting areas with recommended species for planting and installation advice.
- Providing specifications for planting techniques, staking and maintenance (including watering systems and regimes).
- To design schemes to enable planting within footpaths, highway verges and over-ground planters.



Writtle Park Limited

Trees & Development: B.S. 5837

- The planning process in relation to trees can be complex.
- We seek at all stages to guide the client through the procedure, to advise on the best management for the trees in relation to the build and their environment.
- Please contact us for further information or visit <http://www.writtlepark.co.uk/> to learn more of our company.

